

Merry-go-Round



ANGLES

A DIVISION OF AGF

FREE PATTERN

XXXXXXXXXXXXXXXXXXXXXXXXXXXX

Merry-go-Round

QUILT DESIGNED BY AGFstudio



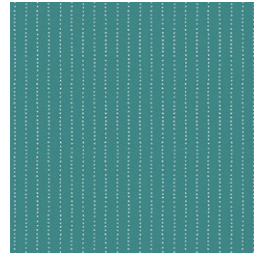
FABRICS DESIGNED BY ALEXANDRA BORDALLO



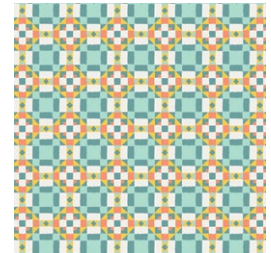
PTC-59710
SHOW TIME



PTC-59700
OPENING ACT



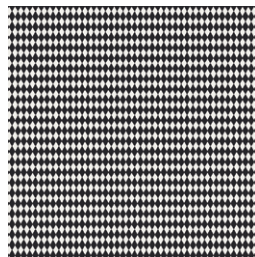
PTC-59701
GRANDSTAND



PTC-59709
WIN A PRIZE



PTC-59704
REARING HORSES SHINE



PTC-59703
BIG TOP



PTC-59702
CAROUSEL JOY



PTC-59705
ADMIT ONE



PTC-59708
POPPIN' STAND



PTC-59711
MUSICAL PARADE



PTC-59707
CIRCUS IS IN TOWN



ADDITIONAL BLENDERS FOR THIS PROJECT



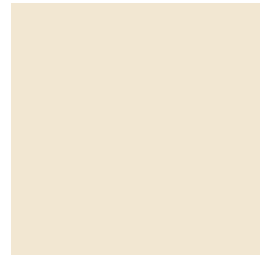
PE-450
GRAPEFRUIT



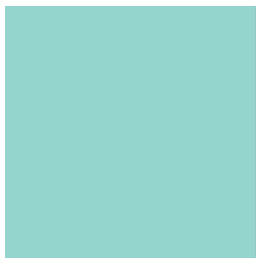
PE-438
CORAL REEF



PE-444
PEACH SHERBET



PE-436
CREME DE LA CREME



PE-403
FRESH WATER



PE-412
TENDER GREEN



PE-452
SPRUCE



PE-458
TOASTY WALNUT



DEN-L-4000
SOFT SAND

Merry-go-Round

FINISHED SIZE | 90" x 90"

FABRIC REQUIREMENTS

| | | |
|-----------------|------------|---------|
| Fabric A | PTC-59710 | 4 yd. |
| Fabric B | PTC-59700 | ½ yd. |
| Fabric C | PTC-59701 | ¾ yd. |
| Fabric D | PTC-59709 | ½ yd. |
| Fabric E | PTC-59704 | ⅞ yd. |
| Fabric F | PTC-59703 | ½ yd. |
| Fabric G | PTC-59702 | ⅝ yd. |
| Fabric H | PTC-59705 | ½ yd. |
| Fabric I | PTC-59708 | ¼ yd. |
| Fabric J | PTC-59711 | ¼ yd. |
| Fabric K | PTC-59707 | ¼ yd. |
| Fabric L | PE-450 | ¼ yd. |
| Fabric M | PE-438 | ⅞ yd. |
| Fabric N | PE-444 | ¼ yd. |
| Fabric O | PE-436 | ¼ yd. |
| Fabric P | PE-403 | ⅜ yd. |
| Fabric Q | PE-412 | ½ yd. |
| Fabric R | PE-452 | 1 ⅞ yd. |
| Fabric S | DEN-L-4000 | ⅛ yd. |
| Fabric T | PE-458 | ¾ yd. |

BACKING FABRIC

PTC-59707 9 yds (Suggested)

BINDING FABRIC

Fabric **C** PTC-59701 (Included)

CUTTING DIRECTIONS

¼" seam allowances are included.
WOF means width of the fabric.

- Two (2) 40½" x 38" rectangles from fabric **A**.
- Two (2) 40½" x 8" rectangles from fabric **A**.
- Two (2) 22½" x 16½" rectangles from fabric **A**.
- Two (2) 15½" x 5½" rectangles from fabric **A**.
- Two (2) 15½" x 3½" rectangles from fabric **A**.
- Two (2) 10½" x 3½" rectangles from fabric **A**.
- Two (2) 5½" x 3½" rectangles from fabric **A**.
- Two (2) 5½" squares from fabric **A**.
- Eighteen (18) 5½" squares from fabric **B**.
- Eight (8) 5½" squares from fabric **C**.
- One (1) Template 7 and 8 from fabric **C**.
- Two (2) 25½" x 5½" rectangles from fabric **D**.
- Four (4) 4½" x 16½" rectangles from fabric **E**.
- Eight (8) 5½" squares from fabric **E**.
- One (1) Template 6 from fabric **F**.
- Two (2) Template 9 from fabric **F**.
- Two (2) 25½" x 3½" strips from fabric **G**.
- Twelve (12) 5½" squares from fabric **G**.
- Two (2) 35½" x 3½" strips from fabric **H**.
- Six (6) 5½" squares from fabric **H**.
- Four (4) 5½" squares from fabrics **I, J, K**.
- Two (2) 30½" x 3½" strips from fabric **L**.
- One (1) template 10, 12, 13, 14, 15 from fabric **L**.
- One (1) template 1, 2, 3, 4, 5, 10 from fabric **M**.
- Six (6) 5½" squares from fabric **N**.
- Four (4) 5½" squares from fabric **O**.
- Eight (8) 5½" squares from fabric **P**.
- Five (5) 4½" x 16½" rectangles from fabric **Q**.
- Two hundred and seventy two (272) 3" squares from fabric **R**.
- One (1) template 12, 13, 14, 15 from fabric **R**.

- One (1) template 11 from fabric **S**.
- One (1) template 11.a from fabric **S**.
- Fifty six (56) 3" squares from fabric **T**.
- Six (6) 1¼" x 19¼" strips from fabric **T**.
- One (1) template 11 from fabric **T**.
- One (1) template 11.a from fabric **T**.

CONSTRUCTION

Sew all rights sides together with ¼" seam allowance.

- Start by placing one (1) 3" squares from fabric **T** at the left top corner of a 5½" square from fabric **B**.
- Sew diagonally, trim ¼" away from seam and press open.
- Place another 3" square from fabric **T** on the top right corner of the same 5½" square from fabric **B**, sew diagonally, trim ¼" away from the seam allowance and press open.
- Keep repeating the same steps with the other two (2) 3" squares from fabric **T** at the two bottom corners of the 5½" square from fabric **B**.
- You need a total of fourteen (14) corner blocks.

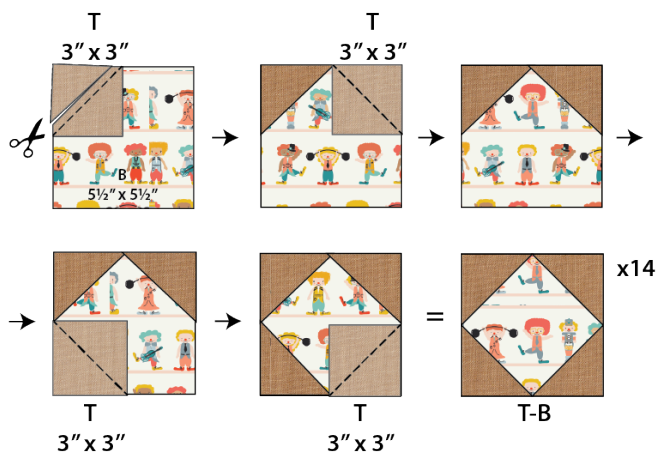


DIAGRAM 1

- Repeat the same steps with fabrics **C, E, P, G, H, N, O, J, B, I, K** 5½" squares, and 3" squares from fabric **R**.

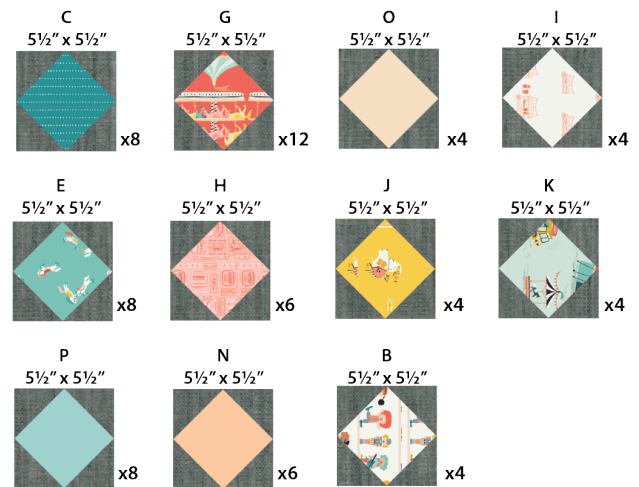


DIAGRAM 2

- Sew all fourteen (14) **T-B** blocks in one row.



DIAGRAM 3

- Join five (5) 4½" x 16½" rectangles from fabric **Q** with our (4) 4½" x 16½" rectangles from fabric **E**.
- See diagram 4 for reference.

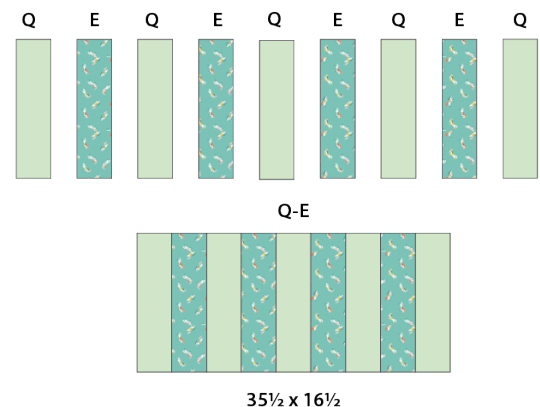


DIAGRAM 4

- Join two (2) $25\frac{1}{2}" \times 3\frac{1}{2}"$ strips from fabric **G**. You should end up with a $50\frac{1}{2}" \times 3\frac{1}{2}"$ strip.
- See diagram 5 for reference.

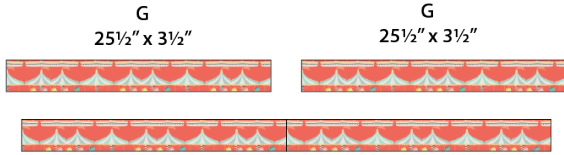


DIAGRAM 5

- Join two (2) $30\frac{1}{2}" \times 3\frac{1}{2}"$ strips from fabric **L**. You should end up with a $60\frac{1}{2}" \times 3\frac{1}{2}"$ strip.
- See diagram 6 for reference.

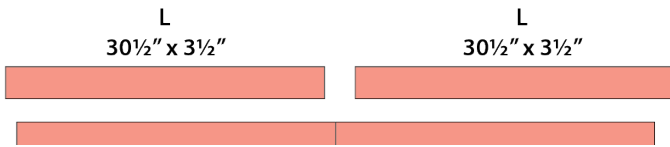


DIAGRAM 6

- Join two (2) $35\frac{1}{2}" \times 3\frac{1}{2}"$ strips from fabric **H**. You should end up with a $70\frac{1}{2}" \times 3\frac{1}{2}"$ strip.
- See diagram 7 for reference.

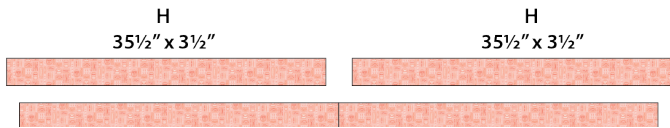


DIAGRAM 7

- Sew two (2) $40\frac{1}{2}" \times 8"$ strips from fabric **A**.
- You should end up with a $80\frac{1}{2}" \times 8"$ strip. Repeat the same step with two (2) $40\frac{1}{2}" \times 38"$ rectangles from fabric **A**. That piece should measure $80\frac{1}{2}" \times 38"$.
- See diagram 8 for reference.



DIAGRAM 8

QUILT TOP

- Follow diagram 9 for quilt top construction on the next page.

• Arrange all pieces into seven (7) rows as shown on diagram below.

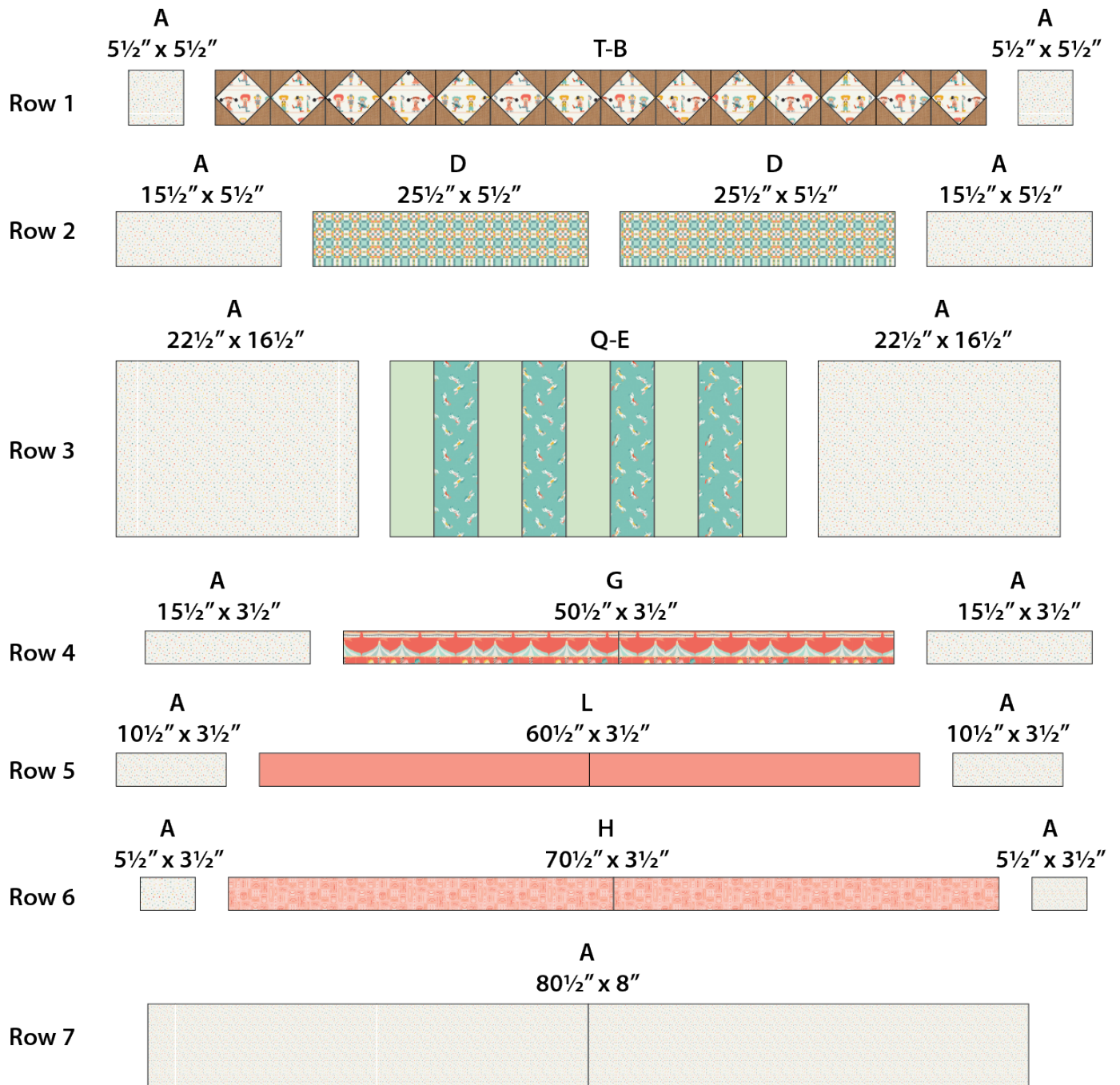


DIAGRAM 9

- Add the $80\frac{1}{2} \times 38$ " rectangle from fabric **A** previously constructed on diagram 8 on the top and sew it with the rows previously constructed in diagram 9.

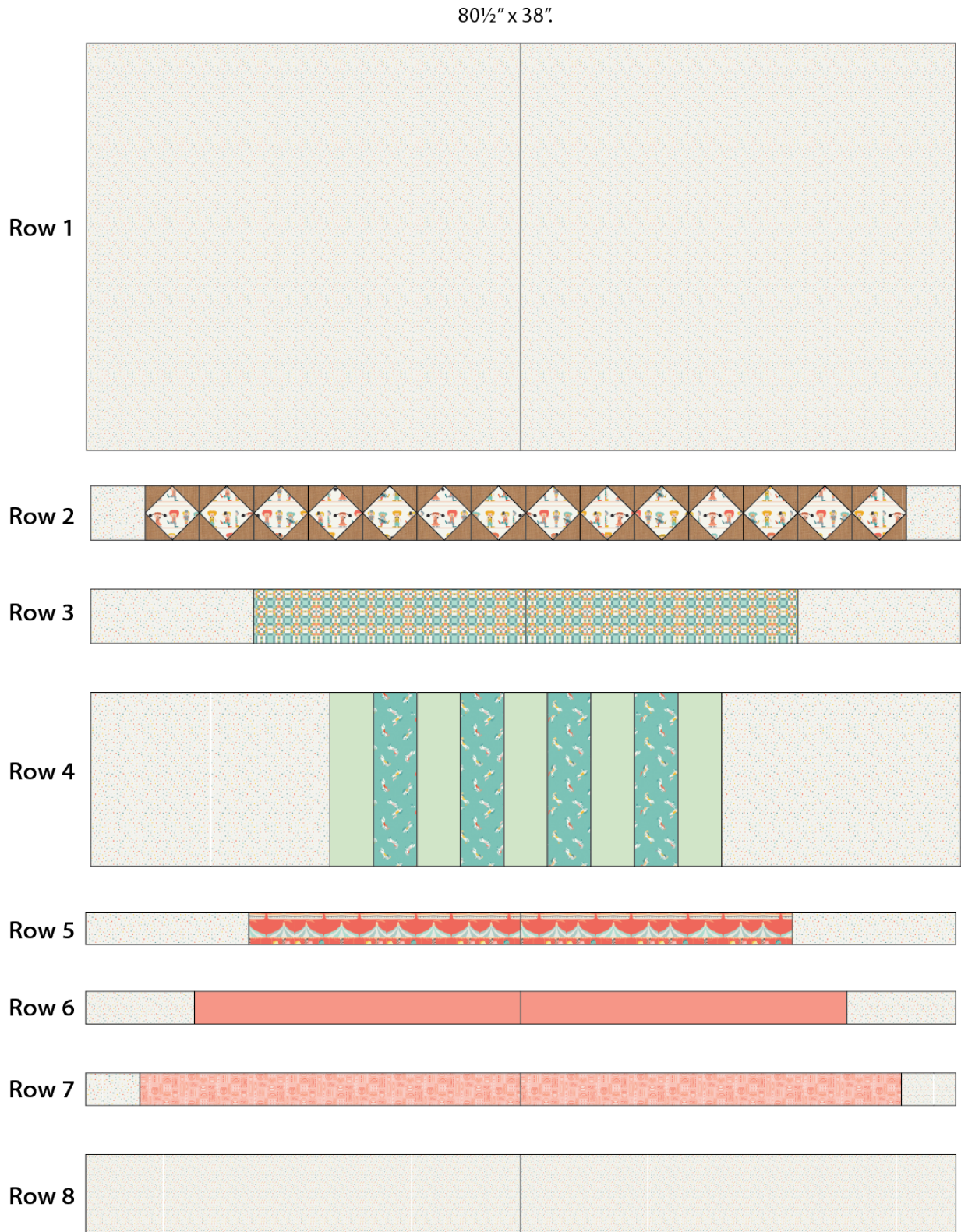


DIAGRAM 10

Strip 1

- Arrange the blocks constructed in diagram 2 as shown on diagram 11 and make a total of two strips.

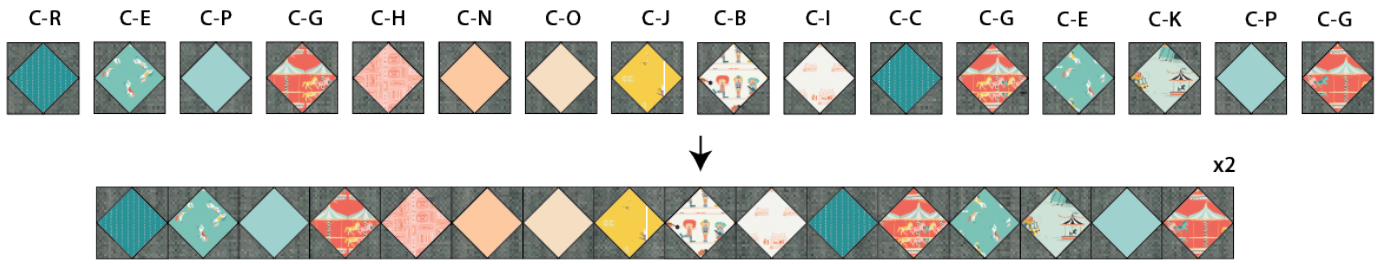


DIAGRAM 11

Strip 2

- Arrange the blocks constructed in diagram 2 as shown on diagram 12 and make a total of two strips.

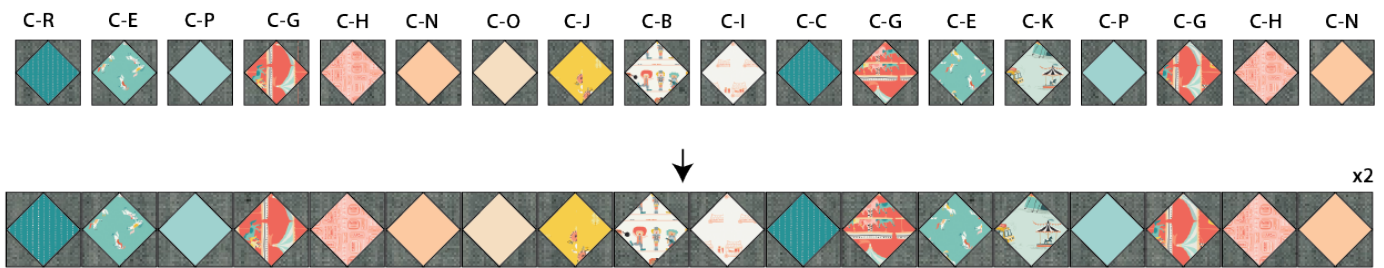


DIAGRAM 12

- Sew one (1) strip 1 to the top and bottom. Pay attention to the direction of the strip.
- Block **C-R** is located to the left in the top strip, and in the bottom strip **C-R** is located to the right.

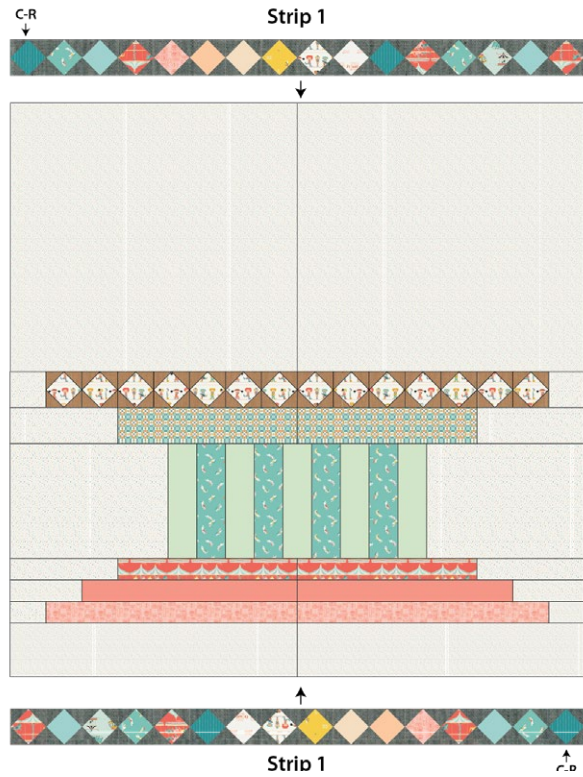


DIAGRAM 13

- Sew one strip 2 on each side of the quilt top, pay attention to the direction of the strip. In the left side block **C-R** is located at the bottom and on the right side is located at the top

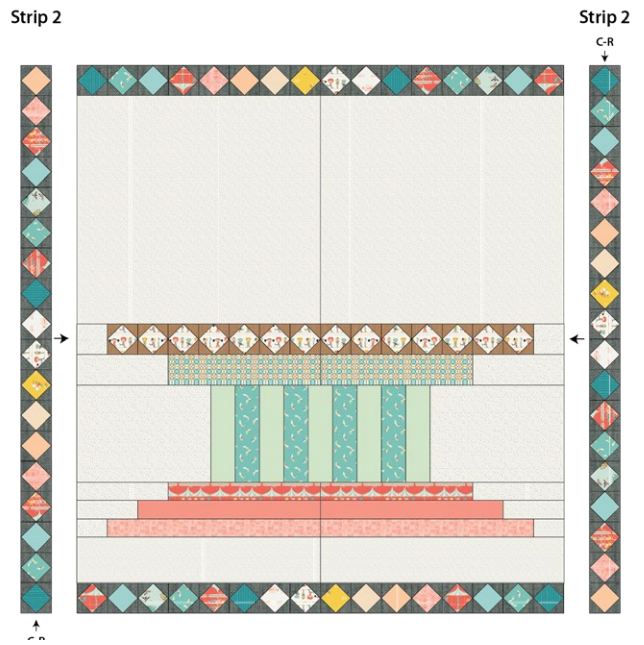


DIAGRAM 14

- Take six (6) 1¼" x 19¼" strips from fabric **T** and using steam a seam applique them as shown on the diagram below.
- Stitch all around the strip with zig zag stitch or a stitch of your choice.

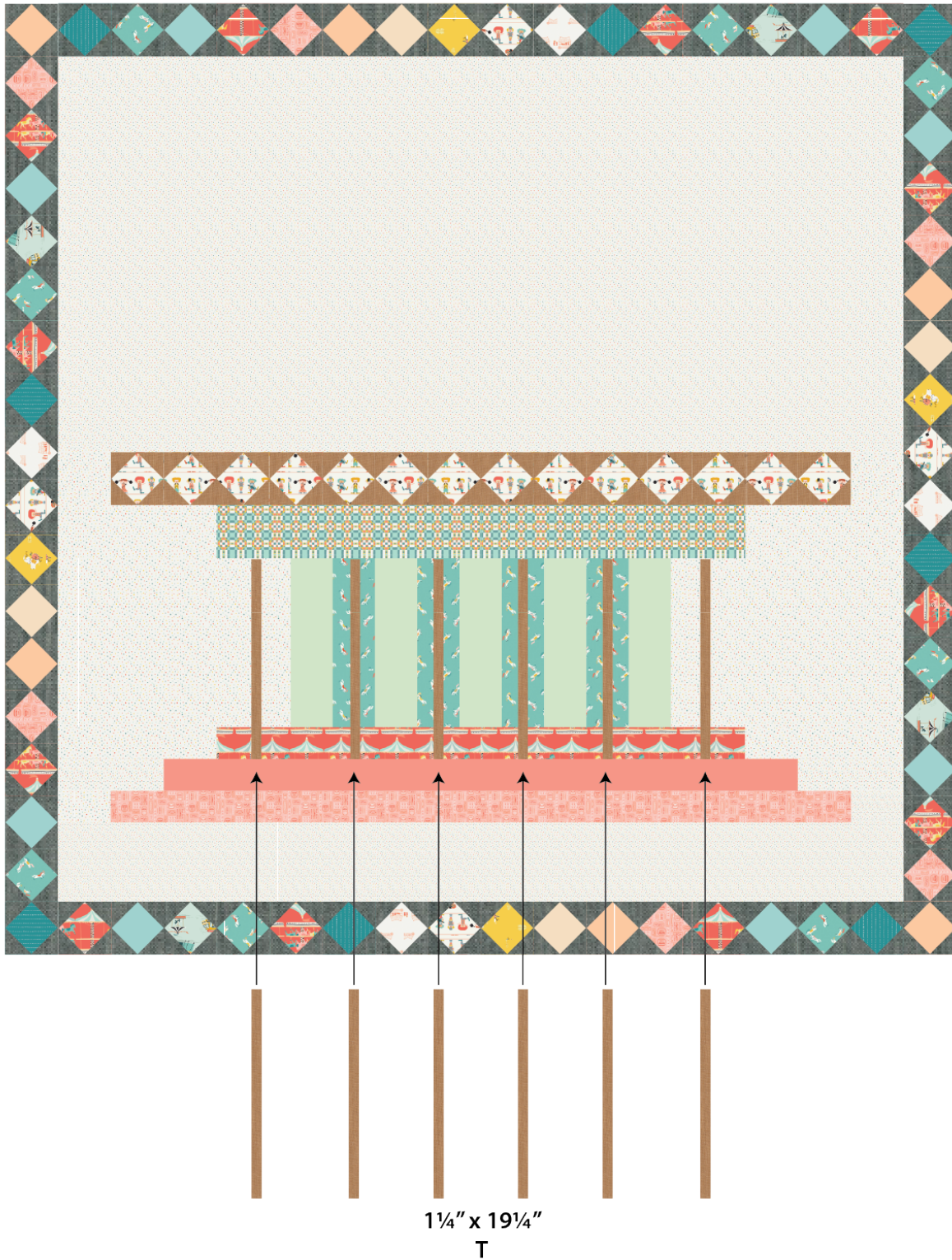


DIAGRAM 15

- Applique templates 1, 2, 3, 4, 5, 6, 7 and 8 with steam a seam. See diagram below for reference.

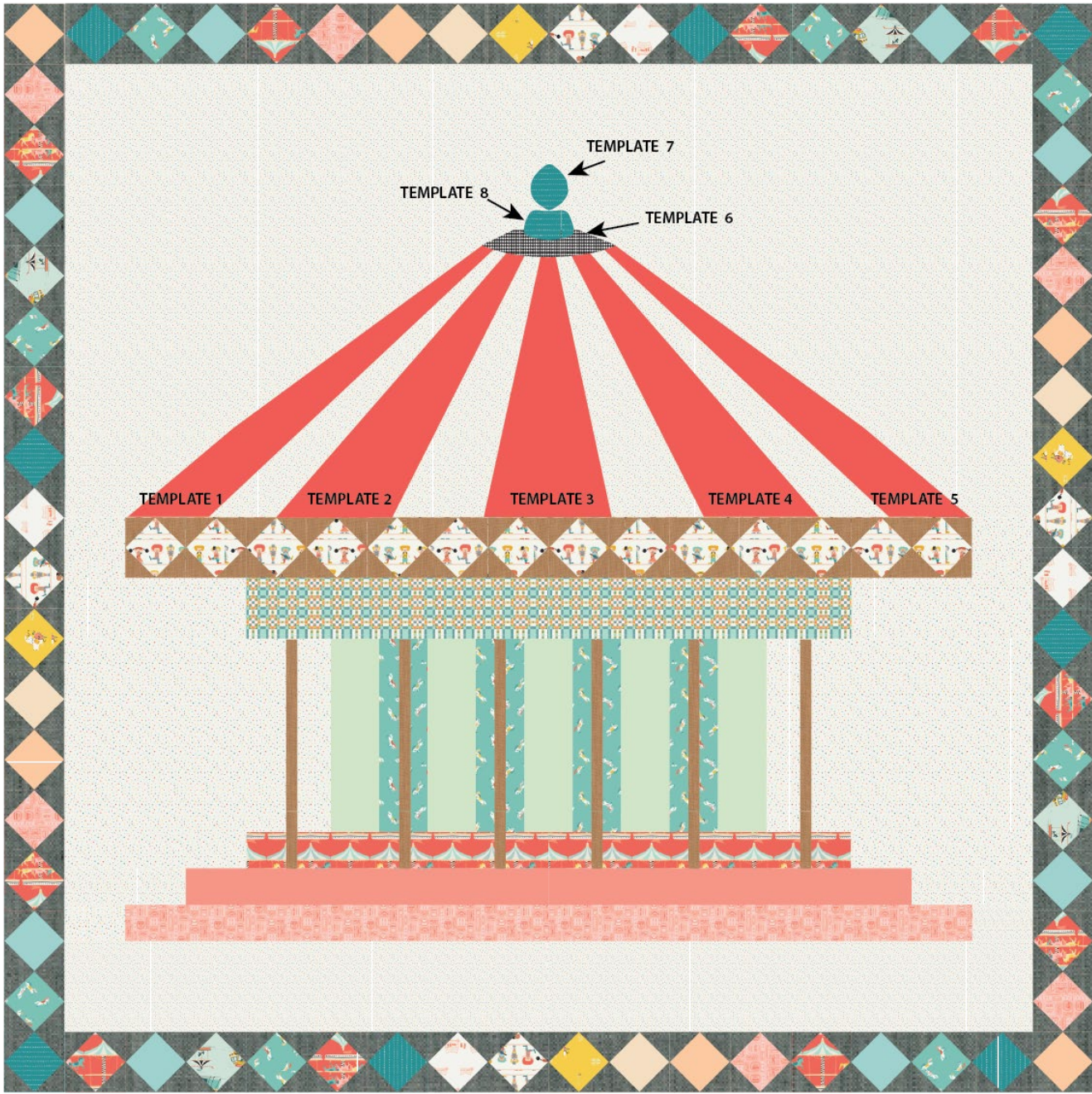


DIAGRAM 16

• Applique templates 9, 10, 11, 11.a, 12, 13, 14 and 15 with steam a seam. See diagram below for reference.

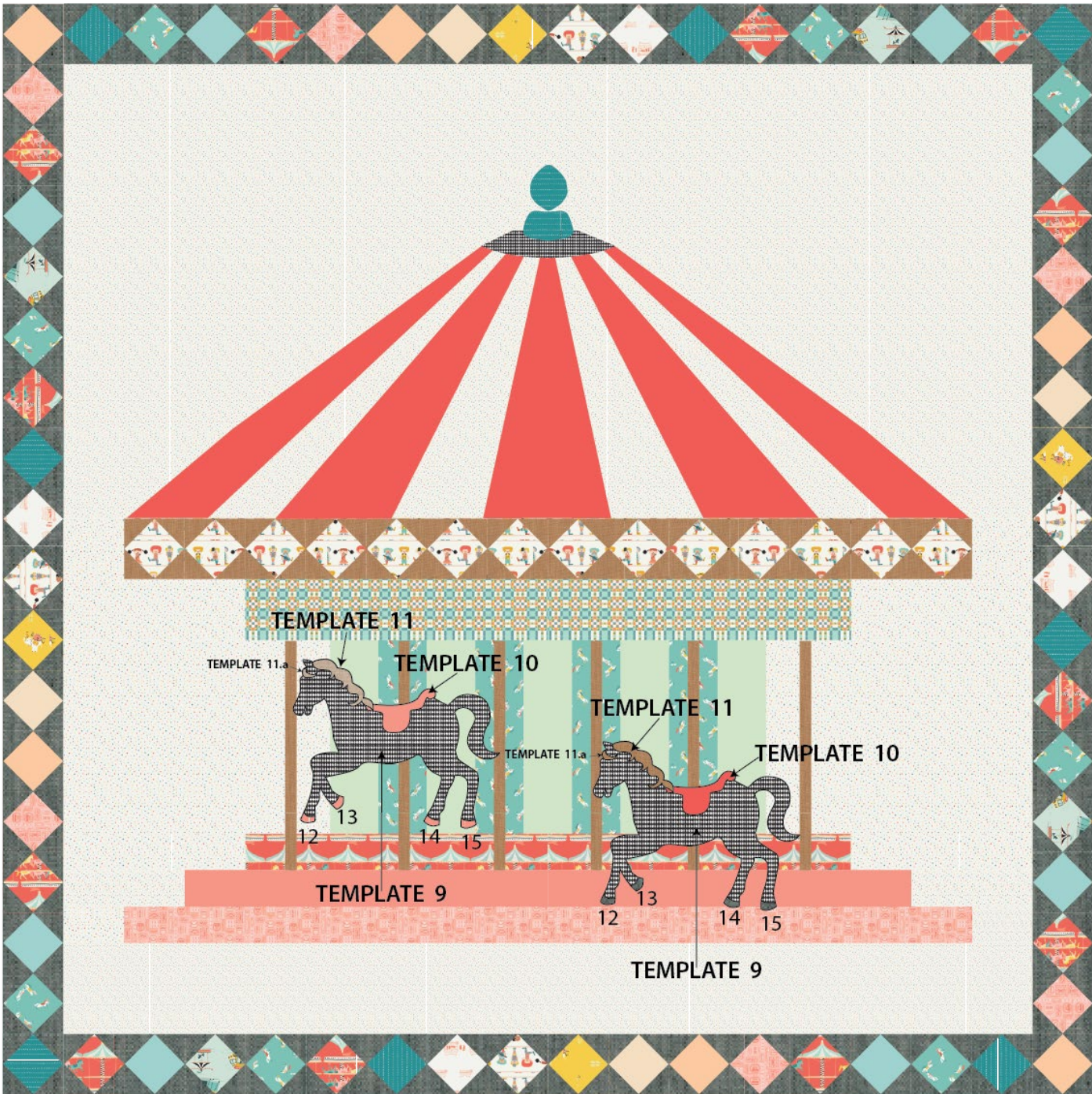


DIAGRAM 17

QUILT ASSEMBLY

Sew rights sides together.

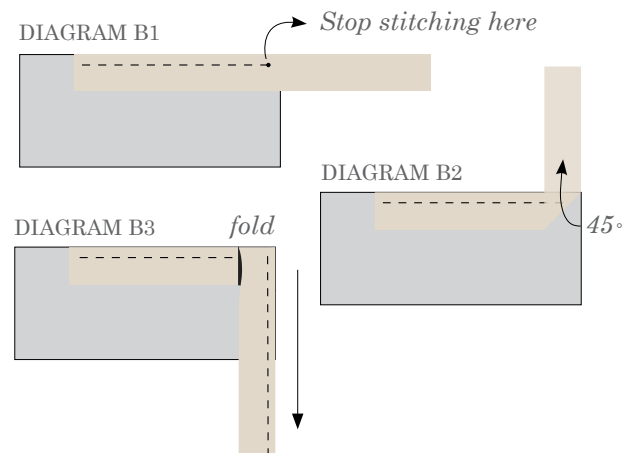
- Place BACKING FABRIC on a large surface wrong side up. Stretch it with masking tape against that surface.
- Place BATTING on top of backing fabric.
- Place TOP on top of the batting with right side facing up. Smooth away wrinkles using your hands.
- Pin all layers together and baste with basting thread, using long stitches. You can also use safety pins to join the layers.
- Machine or hand quilt starting at the center and working towards the corners. Remember that quilting motifs are a matter of personal preference. Have fun choosing yours!
- After you finished, trim excess of any fabric or batting, squaring the quilt to proceed to bind it.

BINDING

Sew rights sides together.

- Cut enough strips $1\frac{1}{2}$ " wide by the width of the fabric **C** to make a final strip 370" long. Start sewing the binding strip in the middle of one of the sides of the quilt, placing the strip right side down and leaving an approximated 5" tail. Sew with $\frac{1}{4}$ " seam allowance (using straight stitch), aligning the strip's raw edge with the quilt top's raw edge.
- Stop stitching $\frac{1}{4}$ " before the edge of the quilt (DIAGRAM B 1). Clip the threads. Remove the quilt from under the machine presser foot. Fold the strip in a motion of 45° and upward, pressing with your fingers (DIAGRAM B2). Hold this fold with your finger, bring the strip down in line with the next edge, making a horizontal fold that aligns with the top edge of the quilt (DIAGRAM B3). Start sewing at $\frac{1}{4}$ " of the border, stitching all the layers. Do the same in the four corners of the quilt.

- Stop stitching before you reach the last 5 or 6 inches. Cut the threads and remove the quilt from under the machine presser foot. Lay the loose ends of the binding flat along the quilt edge, folding the ends back on themselves where they meet. Press them together to form a crease. Using this crease as the stitching line, sew the two open ends of the binding with right sides together (you can help yourself marking with a pencil if the crease is difficult to see).
- Trim seam to $\frac{1}{4}$ " and press open. Complete the sewing. Turn binding to back of the quilt, turn raw edge inside and stitch by hand using blind stitch.



XX

Congratulations & enjoy

XX



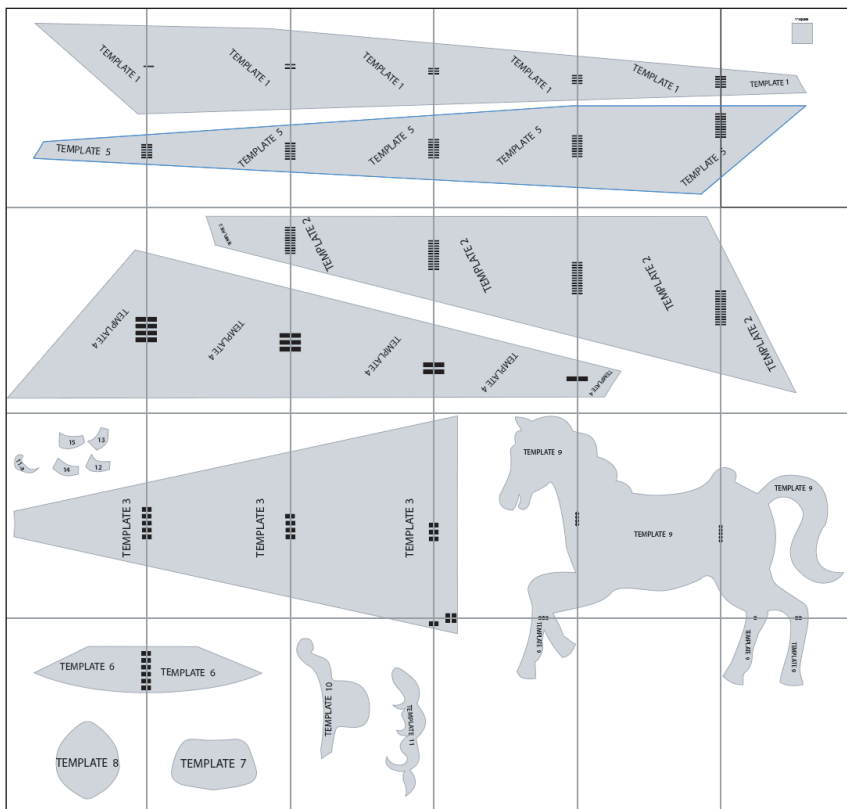
artgalleryfabrics.com

NOTE: While all possible care has been taken to ensure the accuracy of this pattern, We are not responsible for printing errors or the way in which individual work varies.

Please read instructions carefully before starting the construction of this quilt. If desired, wash and iron your fabrics before starting to cut.

© 2021 Courtesy of Art Gallery Quilts LLC. All Rights Reserved.

1" Square



TEMPLATE 1

TEMPLATE 5


TEMPLATE 1

TEMPLATE 5




TEMPLATE 1


TEMPLATE 5

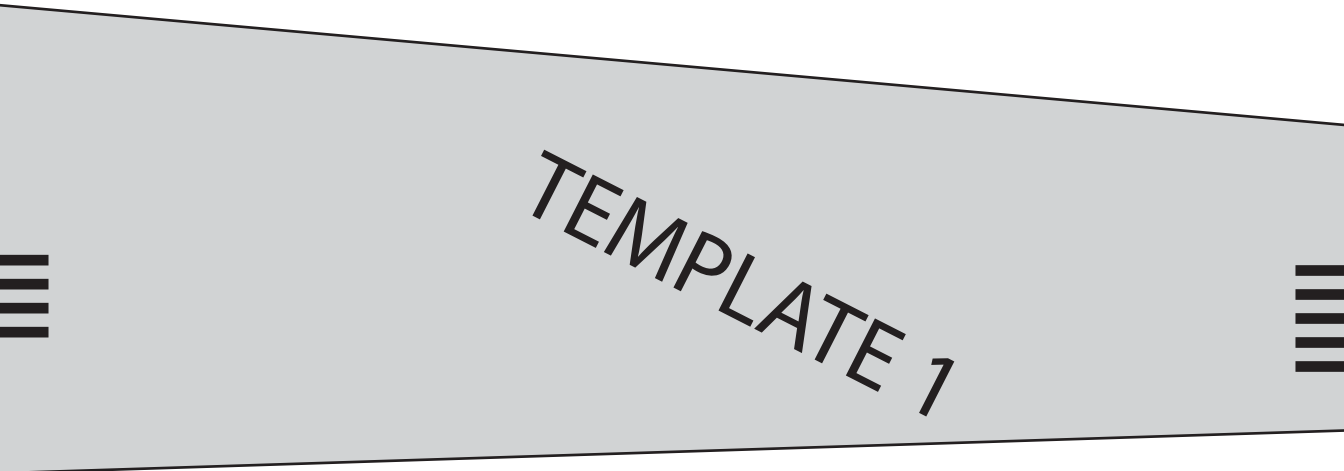


TEMPLATE 1



TEMPLATE 5

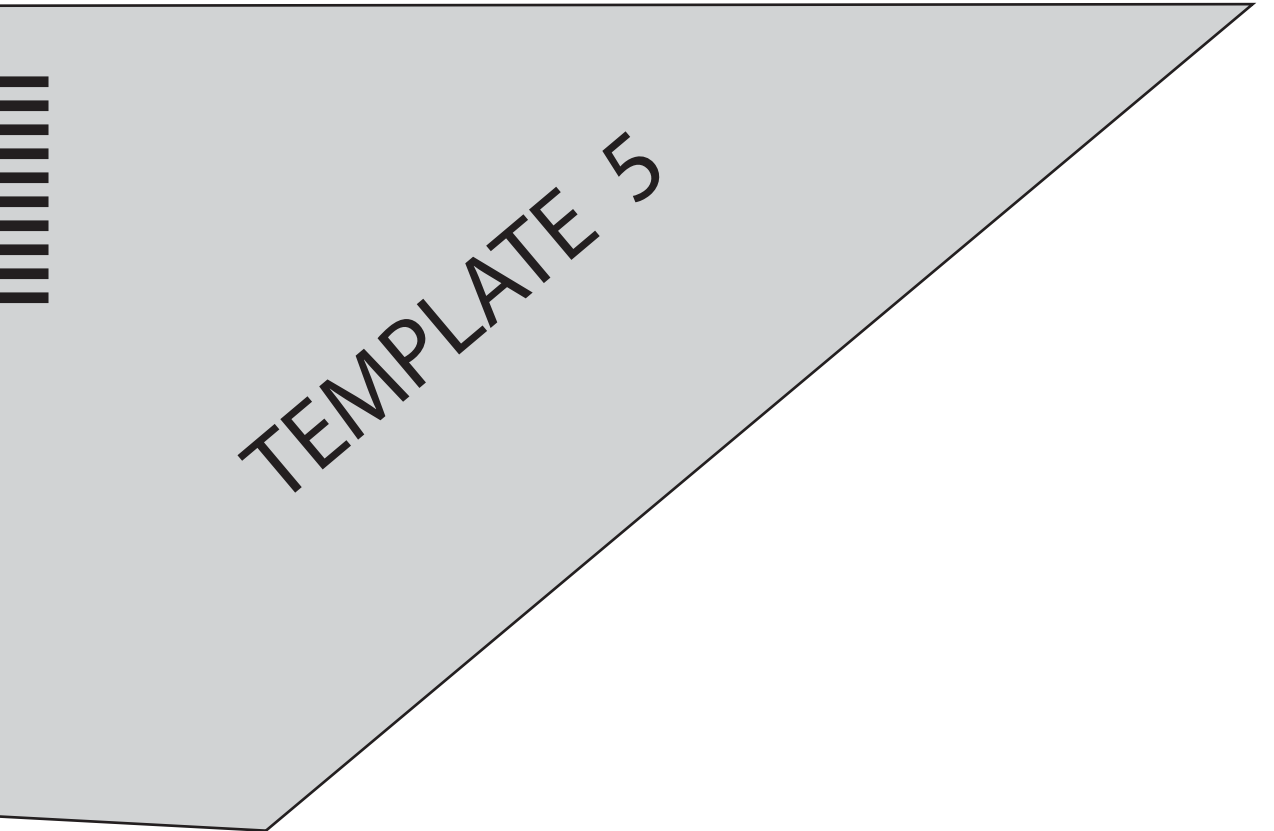


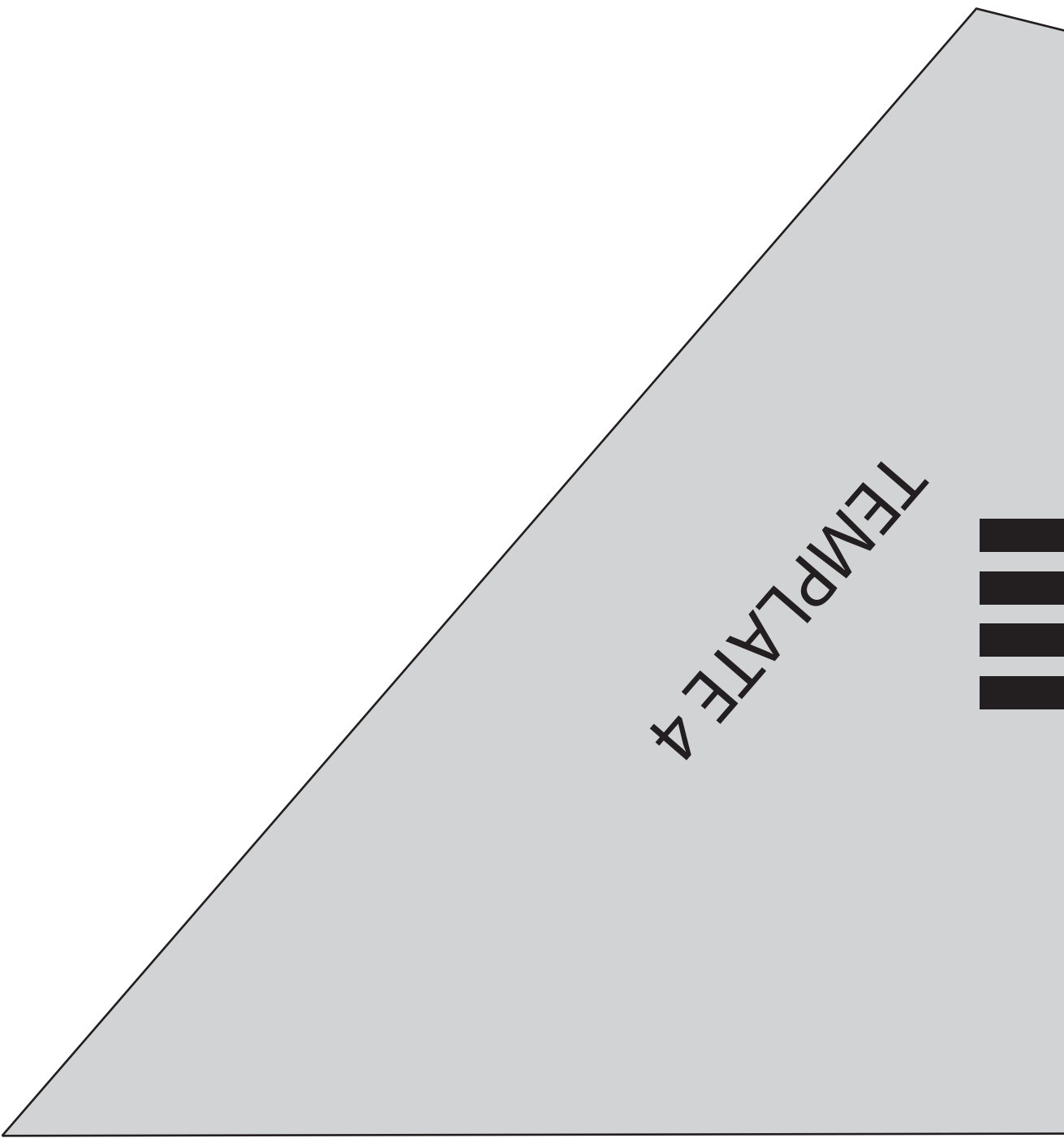


TEMPLATE 1



TEMPLATE 5





TEMPLATE 4

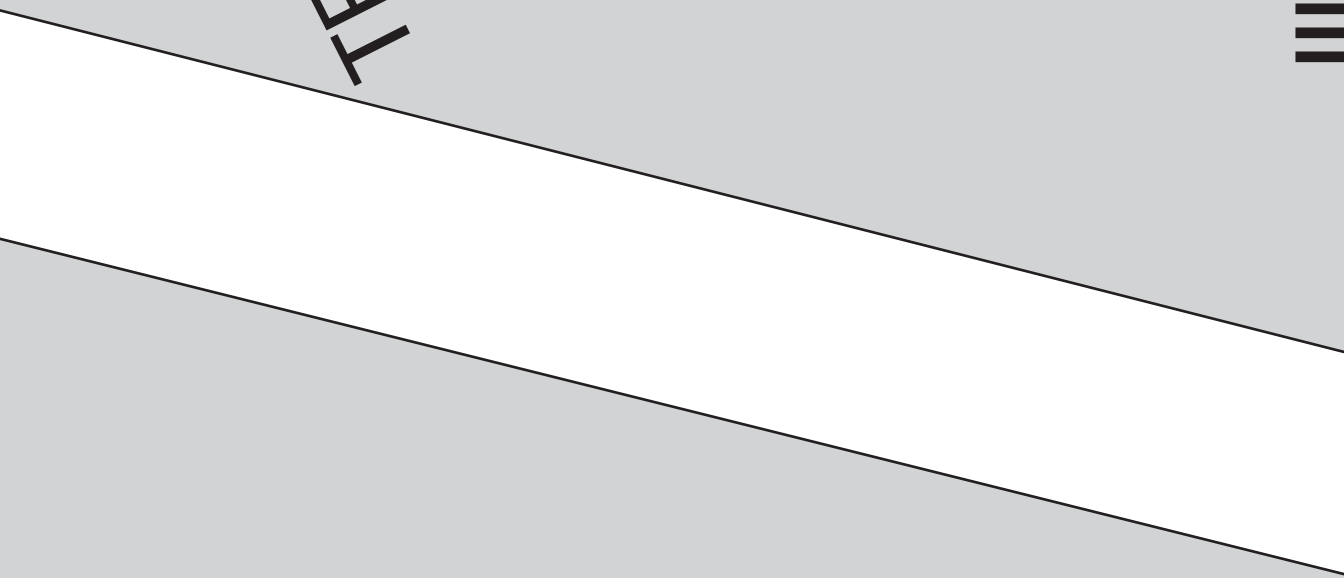


TEMPLATE 4

TEMPLATE 2



TEMPLATE 2

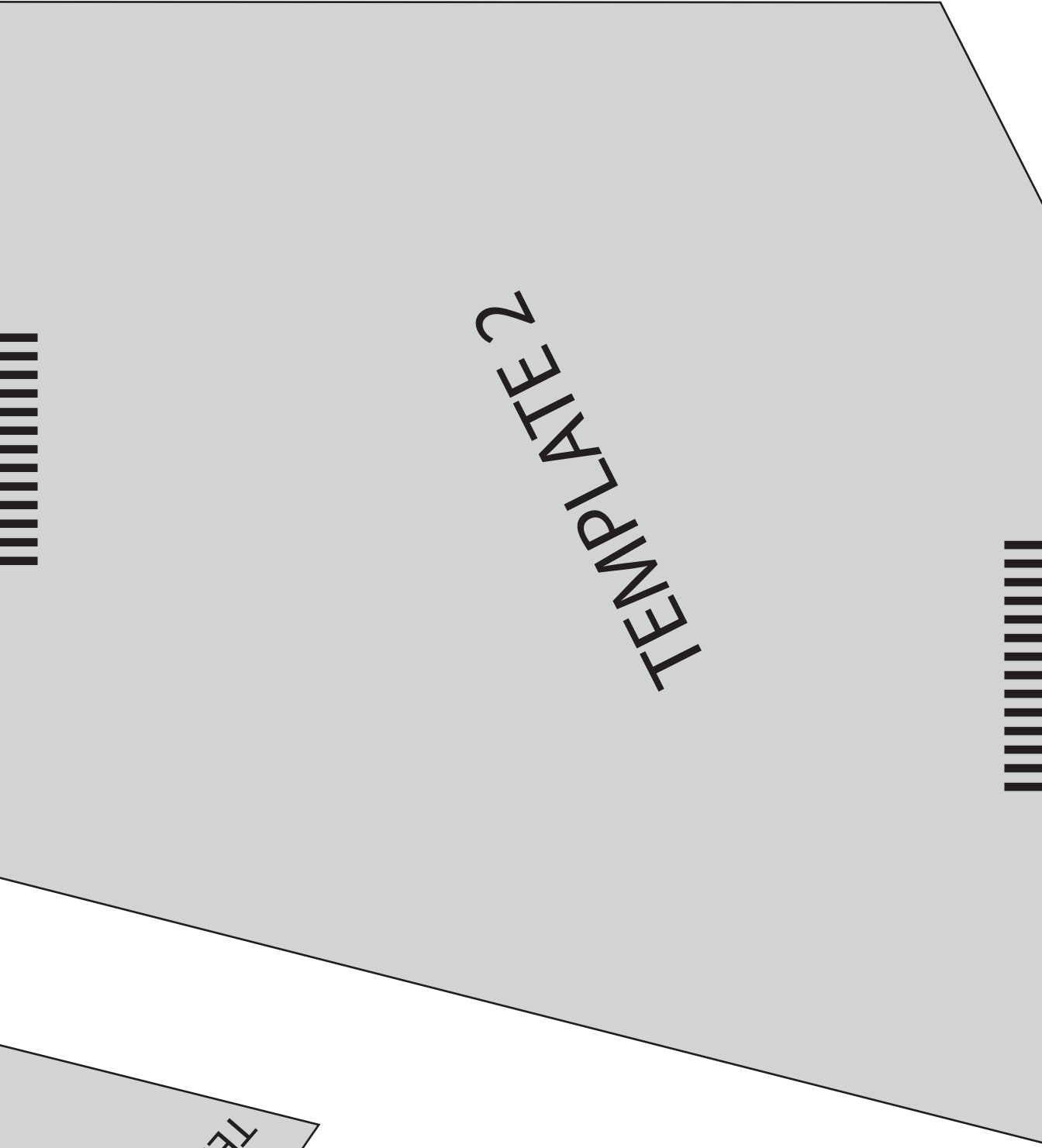


TEMPLATE 4

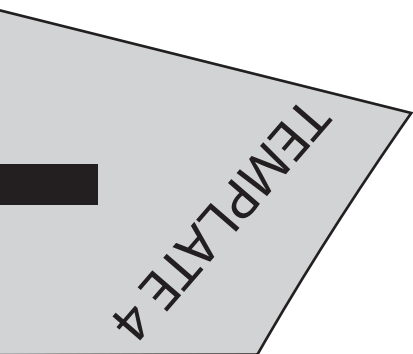


TEMPLATE 2

TEMPLATE 4

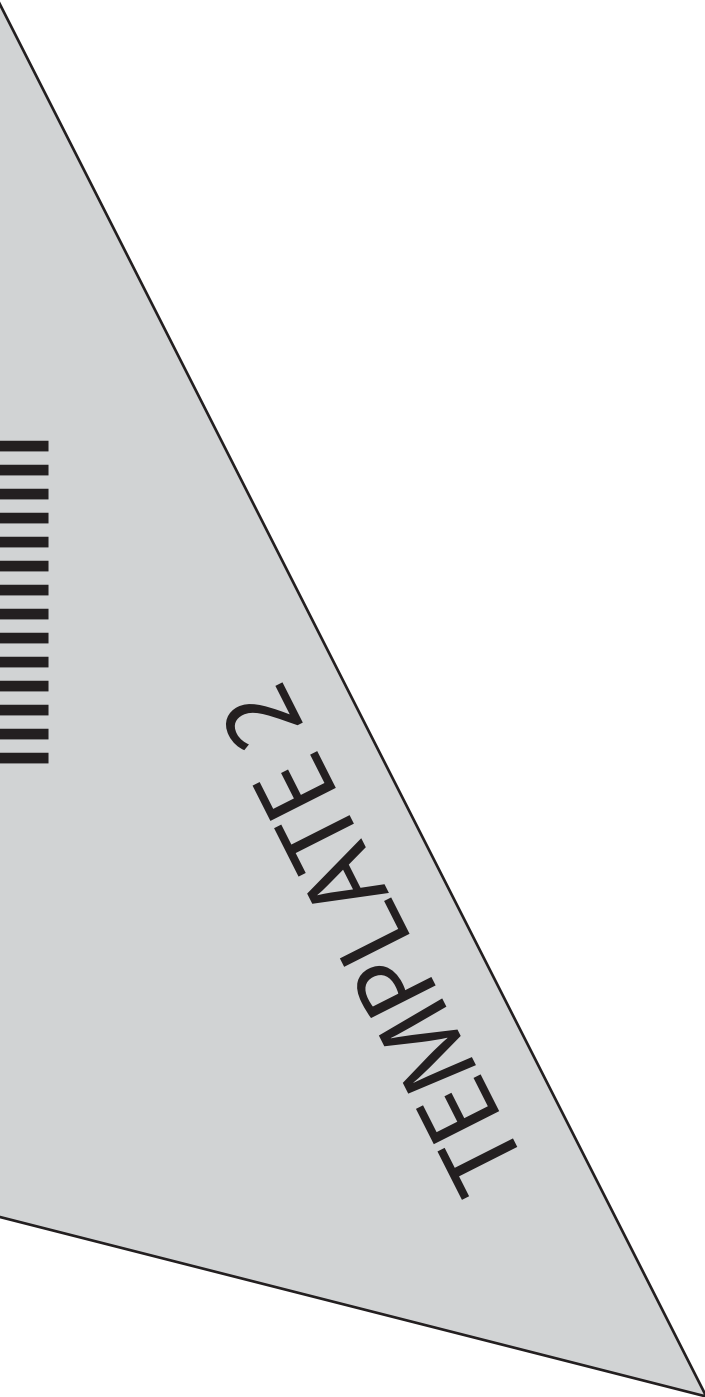


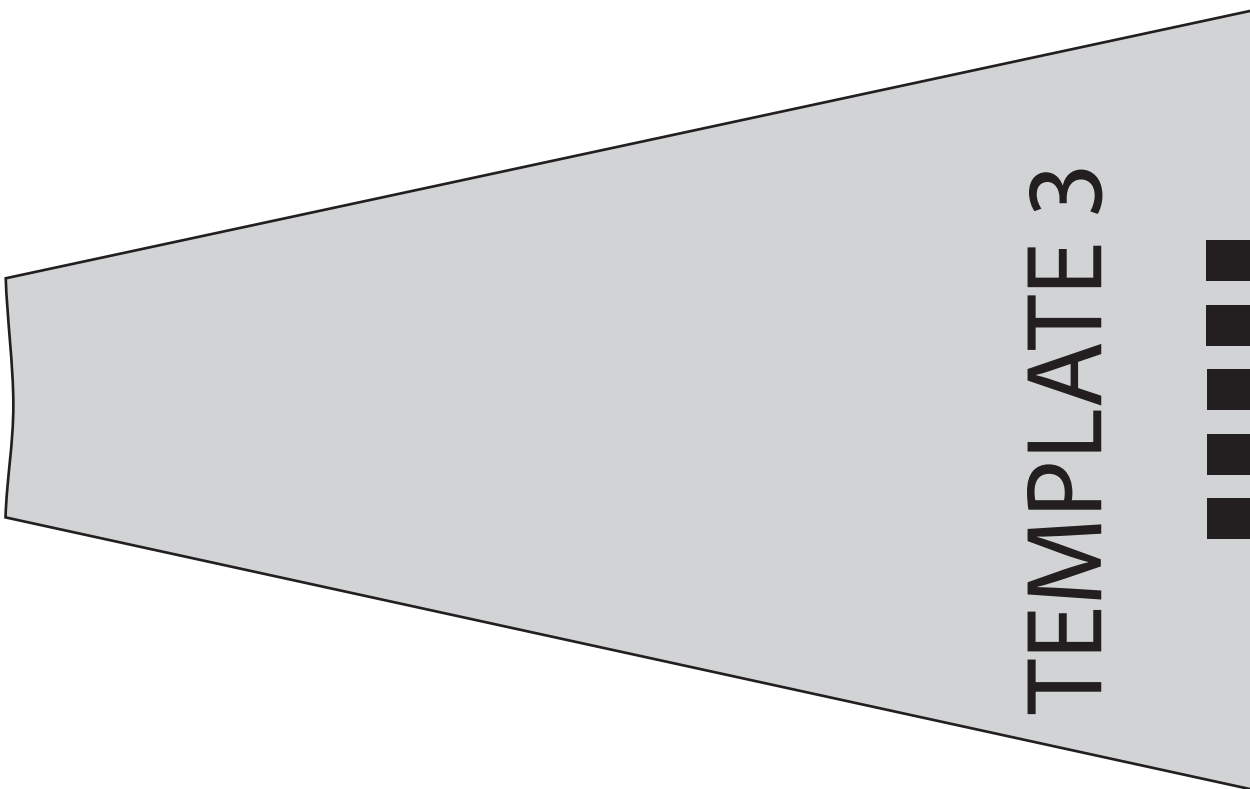
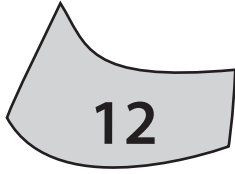
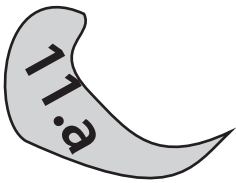
TEMPLATE 2



TEMPLATE 4

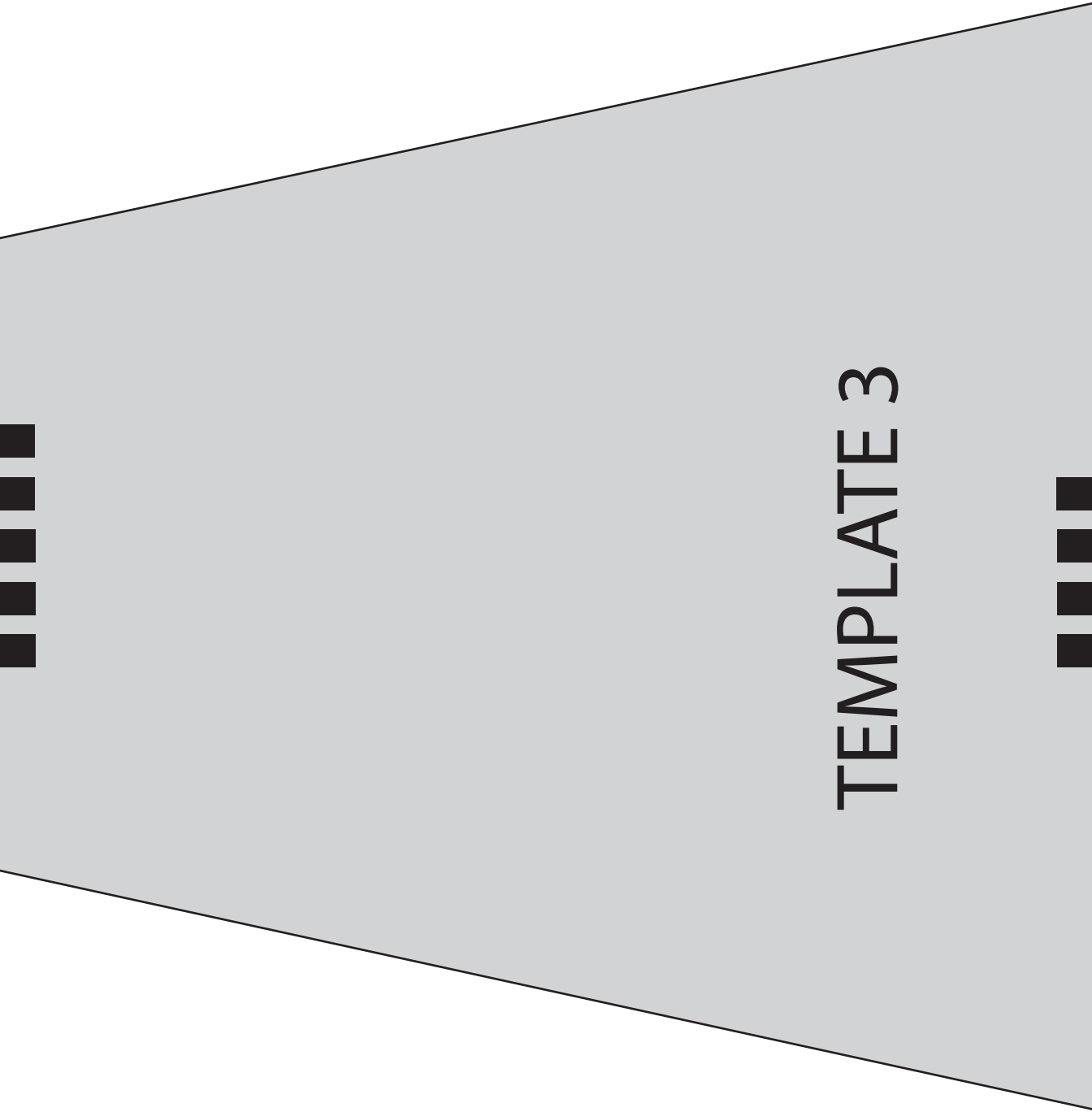






TEMPLATE 3





TEMPLATE 3



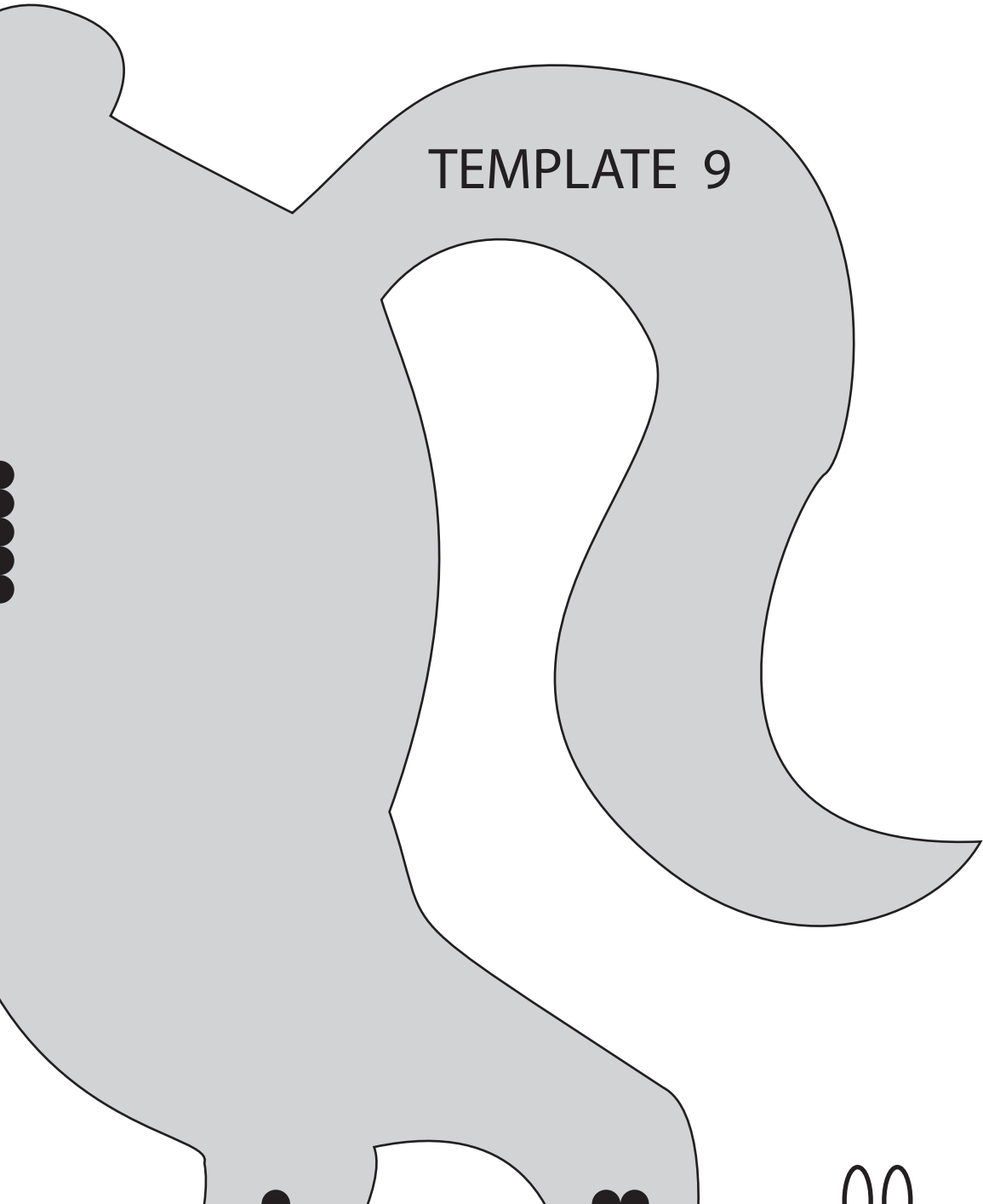
TEMPLATE 3



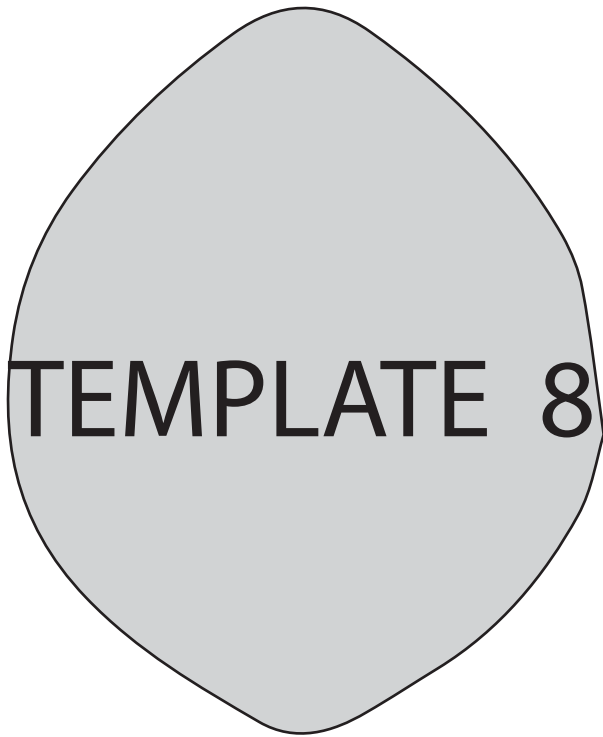
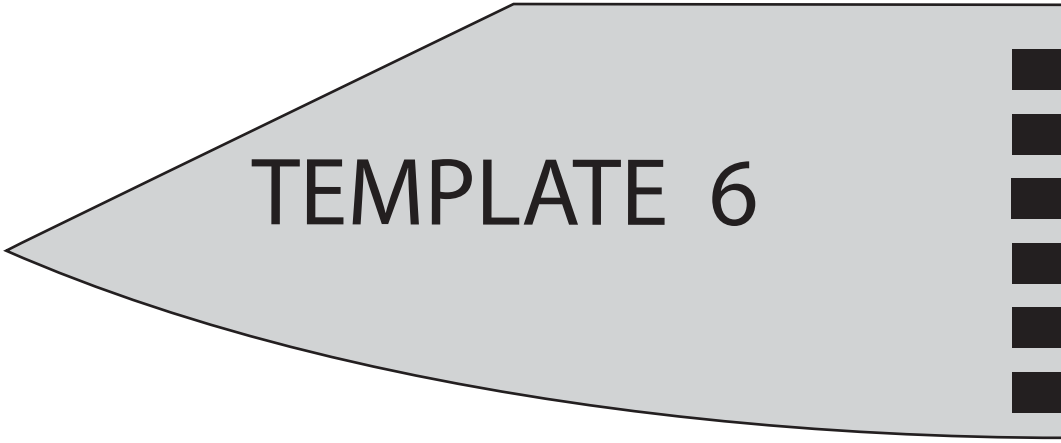
TEMPLATE 9

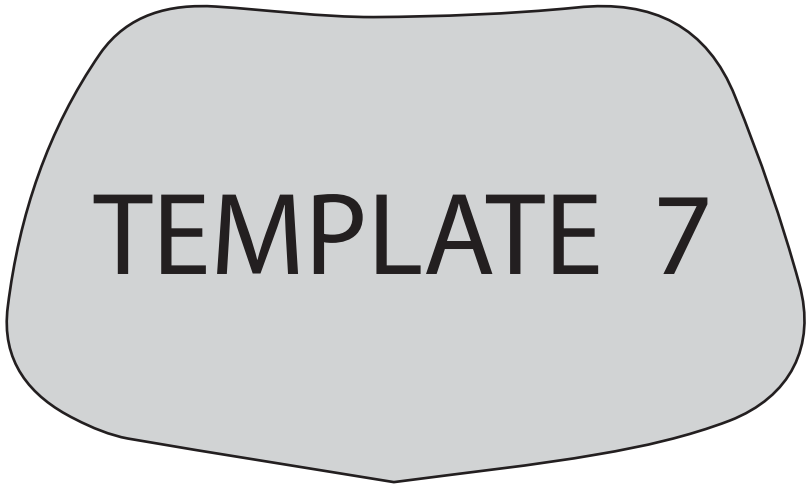
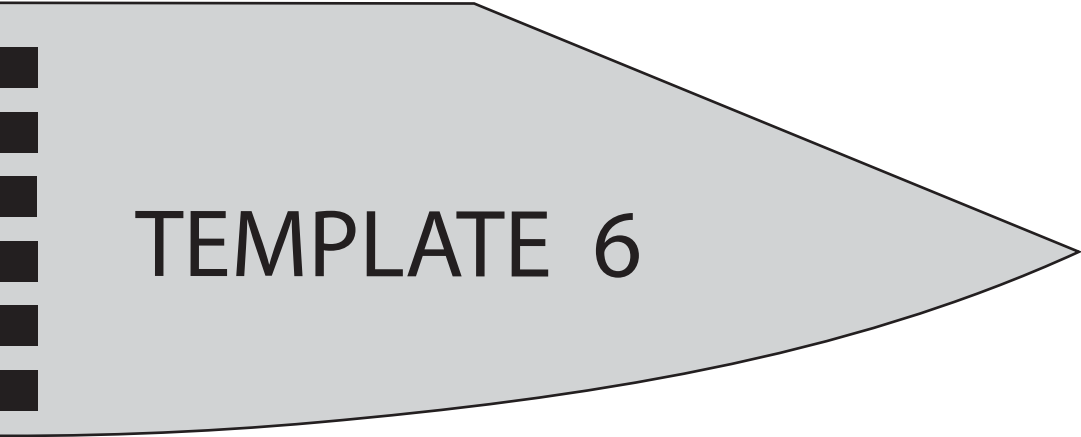


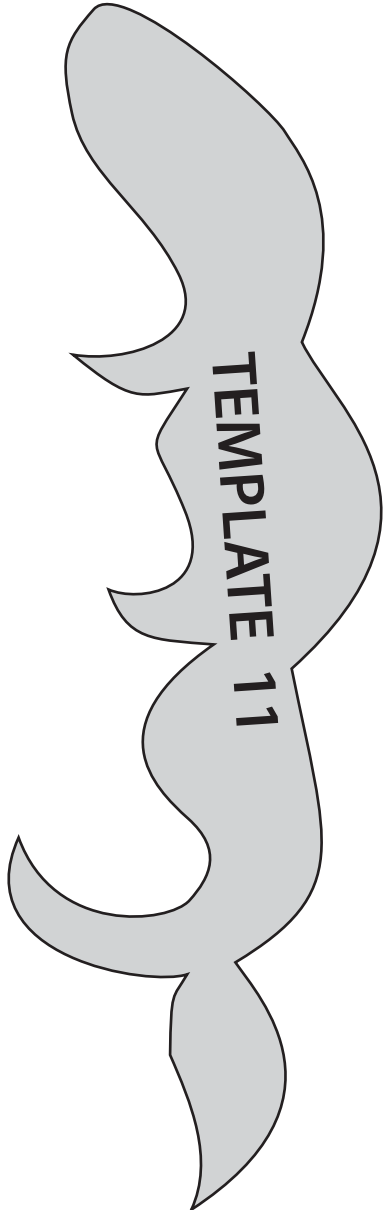
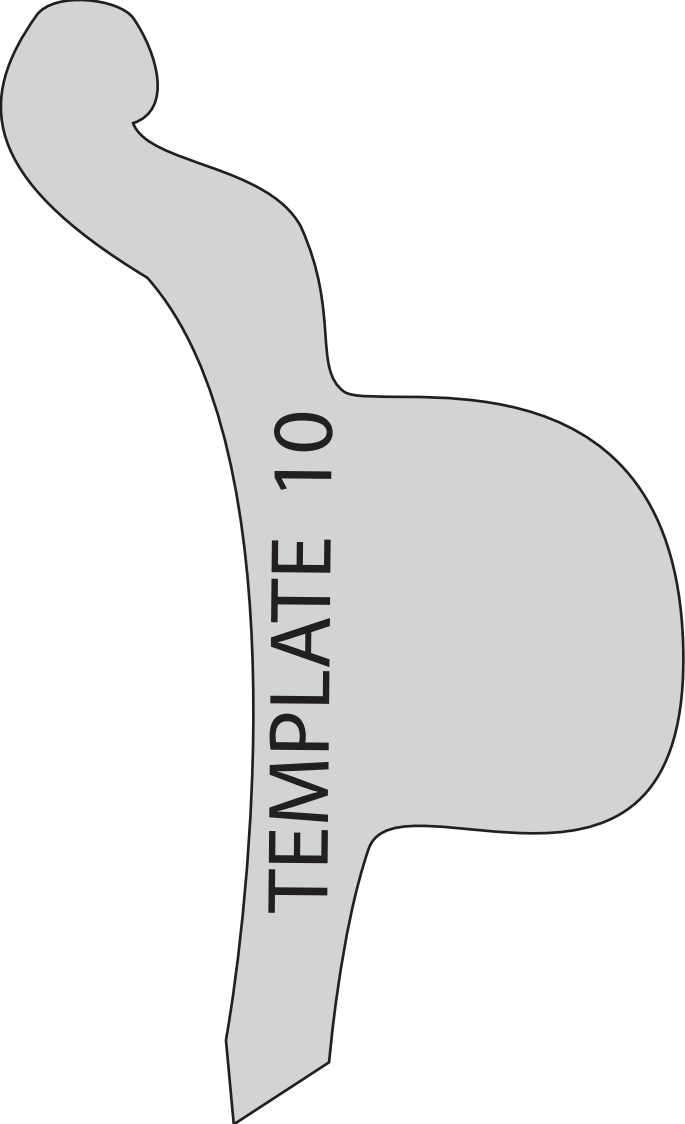
TEMPLATE 9

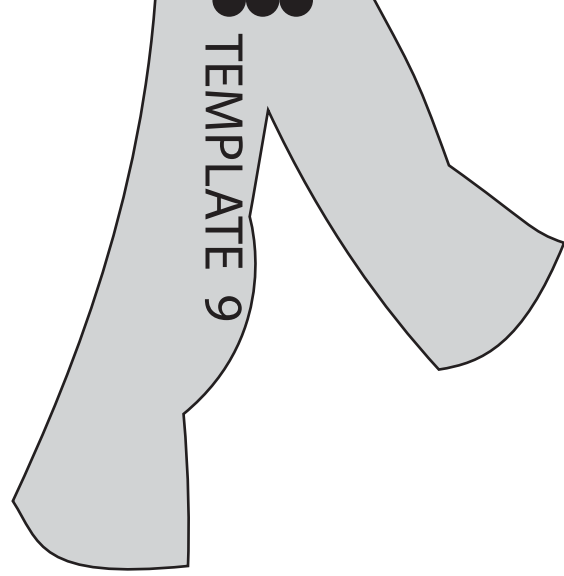
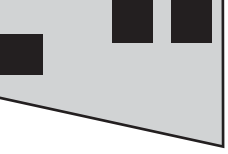


TEMPLATE 9









TEMPLATE 9

33

